



CATALOGUE

GARDEN TOOLS

PRODUCT CATALOGUE



D-69, Sports & Surgical Complex,
Kapurthala Road, Jalandhar
144021



+91- 9878661234
+91- 9814007055
0181-2650956/2650099



contact@nvtools.in
nvenggs@gmail.com

ABOUT US

Established in the year 1996, we at [NV Tools Limited](#), are pioneers in garden tools with specialization in hardening and tempering iron and steel products. With over 200 employees working across 5000 square feet of manufacturing area, our products are sold across domestic and international markets spanning 4 countries.

The offered assembly comprises Carbon spades and forks including Digging Fork, Digging Spade, Shovels, Trowels, Border Spade, Border Fork and stainless steel tools like long handle tools, spades and forks and scrappers.

We manufacture the offered equipment using premium quality metal and other requisite material, procured from the most prestigious vendors of the industry while keeping in mind the quality standards laid by international authorities.

Further, post production, we make the offered equipment pass a test to ensure these are able to meet the required standards based across the globe with their rising demand for offered equipment as these are very easy use, require minimum maintenance, are resistance against corrosion, ensure reliable performance and have robust construction.

For attaining higher level of patrons' satisfaction, we provide the offered equipment as per the detailed specifications. At our sound infrastructure, with the help of installed modern machinery and latest technology, we design the offered equipment as per the prevailing trends of garden tools industry.



CONTENTS

1. Carbon Steel Spades & Forks	1-5
2. Carbon Steel Construction Shovels	6-10
3. Carbon Steel Long Handle Tools	11-16
4. Scrappers	17-19
5. Carbon Steel Hand Trowels	20-30
6. Stainless Steel Hand Trowels	31-34
7. Stainless Steel Long Handle Tools	35-36
8. Stainless Steel Spades & Forks	37-38





CARBON STEEL SPADES & FORKS

CARBON STEEL SPADES AND FORKS

DIGGING SPADE



Heat treated carbon steel head welded to steel tubular shaft with plastic D/ grip



BLADE SIZE(MM) 280x180
SHAFT SIZE(MM) 720

DIGGING FORK

Heat treated carbon steel head welded to steel tubular shaft with plastic D/ grip



BLADE SIZE(MM) 280x180
SHAFT SIZE(MM) 720



BORDER SPADE



Heat treated carbon steel head welded to steel tubular shaft with plastic D/ grip



BLADE SIZE(MM) 230x150
SHAFT SIZE(MM) 690

BORDER FORK

Heat treated carbon steel head welded to steel tubular shaft with plastic D/ grip



BLADE SIZE(MM) 230x150
SHAFT SIZE(MM) 690



DIGGING SPADE



Heat treated carbon steel head
with plastic handle

 BLADE SIZE(MM) 280x180
SHAFT SIZE(MM) 720

DIGGING FORK

Heat treated carbon steel head
with plastic handle


 BLADE SIZE(MM) 280x180
SHAFT SIZE(MM) 720



BORDER SPADE



Heat treated carbon steel head
with plastic handle

 BLADE SIZE(MM) 230x150
SHAFT SIZE(MM) 690

BORDER FORK

Heat treated carbon steel head
with plastic handle

 BLADE SIZE(MM) 230x150
SHAFT SIZE(MM) 690



DIGGING SPADE



Heat treated carbon steel head welded to steel tubular shaft with metal D/ grip

 BLADE SIZE(MM) 280x180
SHAFT SIZE(MM) 740

DIGGING FORK

Heat treated carbon steel head welded to steel tubular shaft with metal D/ grip

 BLADE SIZE(MM) 280x180
SHAFT SIZE(MM) 740



BORDER SPADE



Heat treated carbon steel head welded to steel tubular shaft with metal D/ grip

 BLADE SIZE(MM) 230x180
SHAFT SIZE(MM) 710

BORDER FORK

Heat treated carbon steel head welded to steel tubular shaft with metal D/ grip

 BLADE SIZE(MM) 230x180
SHAFT SIZE(MM) 710



DIGGING SPADE



Heat treated carbon steel head with wooden handle and plastic D/ grip

 BLADE SIZE(MM) 280x180
SHAFT SIZE(MM) 720

DIGGING FORK

Heat treated carbon steel head with wooden handle and plastic D/ grip

 BLADE SIZE(MM) 280x180
SHAFT SIZE(MM) 720



BORDER SPADE



Heat treated carbon steel head with wooden handle and plastic D/ grip

 BLADE SIZE(MM) 230x150
SHAFT SIZE(MM) 690

BORDER FORK

Heat treated carbon steel head with wooden handle and plastic D/ grip

 BLADE SIZE(MM) 230x150
SHAFT SIZE(MM) 690



TRENCH SPADE



Carbon steel head welded to steel tubular shaft with plastic D/ grip

 BLADE SIZE(MM) 445x125
SHAFT SIZE(MM) 740

DRAIN SPADE

Carbon steel head welded to steel tubular shaft with plastic D/ grip

 BLADE SIZE(MM) 410x100
SHAFT SIZE(MM) 730



TRENCH SPADE



Carbon steel head welded to steel tubular shaft with metal D/ grip

 BLADE SIZE(MM) 445x125
SHAFT SIZE(MM) 770

DRAIN SPADE

Carbon steel head welded to steel tubular shaft with metal D/ grip

 BLADE SIZE(MM) 410x100
SHAFT SIZE(MM) 760





CARBON STEEL CONSTRUCTION SHOVELS

SQUARE MOUTH SHOVEL



Carbon steel head with long metal handle and rubber grip



BLADE SIZE(MM) 310 x 245
SHAFT SIZE(MM) 1220

ROUND NOSE SHOVEL

Carbon steel head with long metal handle and rubber grip



BLADE SIZE(MM) 285 x 240
SHAFT SIZE(MM) 1220



SQUARE MOUTH SHOVEL



Carbon steel head with long wooden handle



BLADE SIZE(MM) 310 x 240
SHAFT SIZE(MM) 1370

ROUND NOSE SHOVEL

Carbon steel head with long wooden handle



BLADE SIZE(MM) 285 x 240
SHAFT SIZE(MM) 1370



SQUARE NOSE SHOVEL



Carbon steel head with plastic handle



BLADE SIZE(MM) 310 x 245
SHAFT SIZE(MM) 700

ROUND MOUTH SHOVEL

Carbon steel head with plastic handle



BLADE SIZE(MM) 285 x 240
SHAFT SIZE(MM) 685



SQUARE MOUTH SHOVEL



Carbon steel head with wooden handle and plastic D/grip



BLADE SIZE(MM) 310 x 245
SHAFT SIZE(MM) 700

ROUND MOUTH SHOVEL

Carbon steel head with wooden handle and plastic D/grip



BLADE SIZE(MM) 285 x 240
SHAFT SIZE(MM) 685



SQUARE MOUTH SHOVEL



Carbon steel head with wooden handle and metal D/grip

 BLADE SIZE(MM) 310 x 245
SHAFT SIZE(MM) 740

ROUND MOUTH SHOVEL

Carbon steel head with wooden handle and metal D/grip

 BLADE SIZE(MM) 285 x 240
SHAFT SIZE(MM) 720



ALL STEEL SQUARE MOUTH SHOVEL



Heat treated carbon steel head welded to steel tubular shaft with metal D/ grip

 BLADE SIZE(MM) 305 x 350
SHAFT SIZE(MM) 780

ALL STEEL TAPER MOUTH SHOVEL

Heat treated carbon steel head welded to steel tubular shaft with metal D/ grip

 BLADE SIZE(MM) 305 x 320
SHAFT SIZE(MM) 780



SCOOP



Carbon steel head with wooden handle and plastic D/grip

 BLADE SIZE(MM) 430 x 365
SHAFT SIZE(MM) 710

IRISH SHOVEL

Carbon steel head with long wooden handle


 BLADE SIZE(MM) 350 x 245
SHAFT SIZE(MM) 1300



2 PRONG HAY FORK BIG



Carbon steel head with long wooden handle

 BLADE SIZE(MM) 290 x 110
SHAFT SIZE(MM) 1360

2 PRONG HAY FORK SMALL

Carbon steel head with long wooden handle

 BLADE SIZE(MM) 200 x 110
SHAFT SIZE(MM) 1360



3 PRONG HAY FORK



Carbon steel head with long wooden handle

 BLADE SIZE(MM) 330 x 195
SHAFT SIZE(MM) 1360

4 PRONG HAY FORK

Carbon steel head with long wooden handle

 BLADE SIZE(MM) 360 x 195
SHAFT SIZE(MM) 1360



RAMMER



Carbon steel head with metal handle and rubber grip

 BLADE SIZE(MM) 125 x 125
SHAFT SIZE(MM) 1200



CARBON STEEL LONG HANDLE TOOLS

DUTCH HOE



Pressed steel head with epoxy coated finish, securely fixed to tubular handle with plastic hand grip

 HEAD WIDTH(MM) 135
HANDLE SIZE(MM) 1220

DRAW HOE

Pressed steel head with epoxy coated finish, securely fixed to tubular handle with plastic hand grip

 HEAD WIDTH(MM) 150
HANDLE SIZE(MM) 1220



LAWN RAKE 16 TINES



Pressed steel head with epoxy coated finish, securely fixed to tubular handle with plastic hand grip

 HEAD WIDTH(MM) 380
HANDLE SIZE(MM) 1220

GARDEN RAKE (BENT TYPE)

Pressed steel head with epoxy coated finish, securely fixed to tubular handle with plastic hand grip

 HEAD WIDTH(MM) 310
HANDLE SIZE(MM) 1220



BOW RAKE 16T



Pressed steel head with epoxy coated finish, securely fixed to tubular handle with plastic hand grip

 HEAD WIDTH(MM) 420
HANDLE SIZE(MM) 1220

LAWN RAKE 22 TINES

Pressed steel head with epoxy coated finish, securely fixed to tubular handle with plastic hand grip

 HEAD WIDTH(MM) 420
HANDLE SIZE(MM) 1220



LAWN EDGER



Pressed steel head with epoxy coated finish, securely fixed to tubular steel handle with plastic hand grip

 HEAD WIDTH(MM) 210
HANDLE SIZE(MM) 820

DUTCH HOE

Pressed steel head with epoxy coated finish, securely fixed to tubular handle with plastic hand grip

 HEAD WIDTH(MM) 120
HANDLE SIZE(MM) 1220



THREE PRONG CULTIVATOR



Pressed steel head with epoxy coated finish, securely fixed to tubular handle with plastic hand grip

 HEAD WIDTH(MM) 100
HANDLE SIZE(MM) 1220

LEVLER RAKE

Pressed steel head with epoxy coated finish, securely fixed to tubular handle with plastic hand grip

 HEAD WIDTH(MM) 300
HANDLE SIZE(MM) 1220



GARDEN CLAW



Carbon steel, epoxy coated head with 'T' type detachable handle

 T HANDLE SIZE(MM) 355
HANDLE SIZE(MM) 740

GARDEN RAKE 12T

Pressed steel head with epoxy coated finish, securely fixed to wooden handle

 HEAD WIDTH(MM) 310
HANDLE SIZE(MM) 1220



LAWN EDGER



Pressed steel head with epoxy coated finish, securely fixed to wooden handle and plastic 'T' hand grip

 HEAD WIDTH(MM) 210
HANDLE SIZE(MM) 820

BOW RAKE (12 TEETH)

Pressed steel head with epoxy coated finish, securely fixed to wooden handle

 HEAD WIDTH(MM) 310
HANDLE SIZE(MM) 1220



DUTCH HOE



Pressed steel head with epoxy coated finish, securely fixed to wooden handle

 HEAD WIDTH(MM) 120
HANDLE SIZE(MM) 1220

LAWN RAKE 22 TINES

Pressed steel head with epoxy coated finish, securely fixed to wooden handle

 HEAD WIDTH(MM) 420
HANDLE SIZE(MM) 1220



THREE PONG CULTIVATOR



Pressed steel head with epoxy coated finish, securely fixed to wooden handle

 HEAD WIDTH(MM) 100
HANDLE SIZE(MM) 1220

DUTCH HOE

Pressed steel head with epoxy coated finish, securely fixed to wooden handle

 HEAD WIDTH(MM) 135
HANDLE SIZE(MM) 1220



DRAW HOE



Pressed steel head with epoxy coated finish, securely fixed to wooden handle

 HEAD WIDTH(MM) 150
HANDLE SIZE(MM) 1220

LAWN RAKE 16 TINES

Pressed steel head with epoxy coated finish, securely fixed to wooden handle

 HEAD WIDTH(MM) 380
HANDLE SIZE(MM) 1220



GARDEN RAKE (BENT TYPE 16T)



Heat treated carbon steel head



BLADE SIZE(MM) 460

GARDEN RAKE (STRAIGHT TYPE 14T)

Heat treated carbon steel head



BLADE SIZE(MM) 400



GARDEN RAKE (WELDED) 14T



Heat treated carbon steel head



BLADE SIZE(MM) 380

GARDEN RAKE (RIVETED)

Heat treated carbon steel head



BLADE SIZE(MM) 310





SCRAPERS

ICE SCRAPER



Carbon steel head with long wooden handle

 BLADE SIZE(MM) 150x175
SHAFT SIZE(MM) 1320

TAPER SCRAPER

Carbon steel head with long wooden handle

 BLADE SIZE(MM) 215 x 330
SHAFT SIZE(MM) 950



FLOOR SCRAPER BIG



Spring steel head, epoxy coated finish, securely fixed to tubular steel handle with rubber hand grip

 BLADE SIZE(MM) 240 X 90
SHAFT SIZE(MM) 1200

FLOOR SCRAPER SMALL

Spring steel head, epoxy coated finish, securely fixed to tubular handle with rubber hand grip

 BLADE SIZE(MM) 125x120
SHAFT SIZE(MM) 1200



CARBIDE SCRAPER 100MM



Carbide steel head, epoxy coated finish, securely fixed to tubular steel handle with rubber hand grip

 BLADE SIZE(MM) 100
SHAFT SIZE(MM) 1200

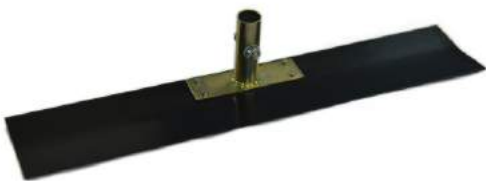
CARBIDE SCRAPER 150MM

Carbide steel head, epoxy coated finish, securely fixed to tubular steel handle with rubber hand grip

 BLADE SIZE(MM) 150
SHAFT SIZE(MM) 1200



SPENDIMALTA



Spring steel head

 BLADE SIZE(MM) 500 X 100

SCRAPER 4"

Spring steel head

 BLADE SIZE(MM) 100



SCRAPER 6"



Spring steel head



BLADE SIZE(MM) 150

SCRAPER 8"

Spring steel head



BLADE SIZE(MM) 200



SHEET SCRAPER



Mild steel head



BLADE SIZE(MM) 125



CARBON STEEL HAND TROWELS

CARBON STEEL HAND TROWELS

HAND TROWEL

Carbon steel head with plastic handle



HANDLE SIZE(MM) 150

HAND WEEDER WITH SUPPORT

Carbon steel head with plastic handle



HANDLE SIZE(MM) 150



HAND CULTIVATOR

Carbon steel head with plastic handle



HANDLE SIZE(MM) 150

HAND FORK

Carbon steel head with plastic handle



HANDLE SIZE(MM) 150



HAND TRANSPLANTER

Carbon steel head with plastic handle



HANDLE SIZE(MM) 150

HAND WEEDER

Carbon steel head with plastic handle



HANDLE SIZE(MM) 150



NARROW TRANSPLANTER

Carbon steel head



HANDLE LENGTH(MM) 100

HAND TROWEL

Carbon steel head with wooden handle



HANDLE SIZE(MM) 150



HAND FORK



Carbon steel head with wooden handle



HANDLE SIZE(MM) 150

HAND TRANSPLANTER

Carbon steel head with wooden handle



HANDLE SIZE(MM) 150



HAND WEEDER WITH SUPPORT

Carbon steel head with wooden handle



HANDLE SIZE(MM) 150

HAND CULTIVATOR

Carbon steel head with wooden handle



HANDLE SIZE(MM) 150



HAND WEEDER

Carbon steel head with wooden handle



HANDLE SIZE(MM) 150

BEND HOE 5"

Carbon steel head



BLADE SIZE(MM) 125 X 50



BEND HOE 6"

Carbon steel head



BLADE SIZE(MM) 150 X 50

SINGLE GRUBBER

Carbon steel head



BLADE SIZE(MM) 185 X 75



DOULBE GRUBBER

Carbon steel head



BLADE SIZE(MM) 300 X 75

HOE 5" (KASSI)

Carbon steel head



BLADE SIZE(MM) 115



BEND HOE 5"



Carbon steel head with epoxy coated finish, securely fixed to tubular steel handle with rubber grip



BLADE SIZE(MM) 125 X 50
SHAFT SIZE(MM) 460

BEND HOE 6"

Carbon steel head with epoxy coated finish, securely fixed to tubular steel handle with rubber grip



BLADE SIZE(MM) 150 X 50
SHAFT SIZE(MM) 460



GRUBBER (SINGLE)



Carbon steel head with epoxy coated finish, securely fixed to tubular steel handle with rubber grip



BLADE SIZE(MM) 135 X 75
SHAFT SIZE(MM) 460

GRUBBER (DOUBLE)

Carbon steel head with epoxy coated finish, securely fixed to tubular steel handle with rubber grip



BLADE SIZE(MM) 300 X 75
SHAFT SIZE(MM) 460



HOE 5" (KASSI)



Carbon steel head with epoxy coated finish, securely fixed to tubular steel handle with rubber grip



BLADE SIZE(MM) 115
SHAFT SIZE(MM) 460

DRAW HOE (SINGLE ROD)

Carbon steel head



BLADE SIZE(MM) 50 X 165



DRAW HOE (DOUBLE ROD)



Carbon steel head



BLADE SIZE(MM) 50 X 165

HOE (DOUBLE ROD)

Carbon steel head



BLADE SIZE(MM) 70 X 400



HOE THREE PRONG (HEAD)



Carbon steel head



BLADE SIZE(MM) 200 X 75

HOE TWO PRONG (HEAD)

Carbon steel head



BLADE SIZE(MM) 200 X 75



HOE TROWEL (HEAD)

Carbon steel head



BLADE SIZE(MM) 210 X 75

DUST PAN

Carbon steel head



BLADE SIZE(MM) 255 X 210
SHAFT SIZE(MM) 210



DUST PAN

Carbon steel head



BLADE SIZE(MM) 255 X 210
SHAFT SIZE(MM) 240

HAND HOE TROWEL

Carbon steel head with wooden handle



HANDLE SIZE(MM) 130



HAND RAKE



Carbon steel head with wooden handle



HANDLE SIZE(MM) 130

HAND HOE 2 PRONG

Carbon steel head with wooden handle



HANDLE SIZE(MM) 130



HAND HOE 1 PRONG

Carbon steel head with wooden handle



HANDLE SIZE(MM) 130



SINGLE TROWEL (12")

Carbon steel head welded to steel tubular handle with rubber grip



BLADE SIZE(MM) 120X 60
SHAFT SIZE(MM) 300



SINGLE HOE (12")



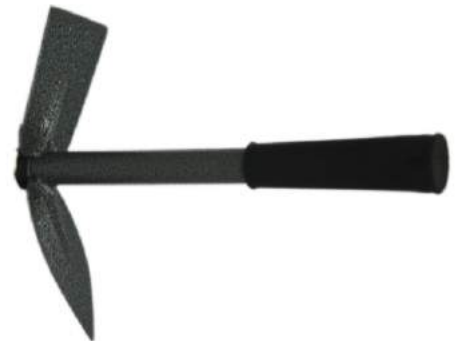
Carbon steel head welded to steel tubular handle with rubber grip

 BLADE SIZE(MM) 110 X 75
SHAFT SIZE(MM) 300

HOE TROWEL (12")

Carbon steel head welded to steel tubular handle with rubber grip


 BLADE SIZE(MM) 240 X 75
SHAFT SIZE(MM) 300



HOE SINGLE PRONG (12")



Carbon steel head welded to steel tubular handle with rubber grip

 BLADE SIZE(MM) 215 X 75
SHAFT SIZE(MM) 300

HOE 3 PRONG (12")

Carbon steel head welded to steel tubular handle with rubber grip

 BLADE SIZE(MM) 80
SHAFT SIZE(MM) 300



TROWEL 3 PRONG (12")



Carbon steel head welded to steel tubular handle with rubber grip

 BLADE SIZE(MM) 80
SHAFT SIZE(MM) 300

HOE 2 PRONG (12")

Carbon steel head welded to steel tubular handle with rubber grip

 BLADE SIZE(MM) 225 X 75
SHAFT SIZE(MM) 300



6 TEETH RAKE



Carbon steel head welded to steel tubular handle with rubber grip

 BLADE SIZE(MM) 150
SHAFT SIZE(MM) 300



STAINLESS STEEL HAND TROWELS

STAINLESS STEEL HAND TROWELS

HAND TROWEL

Stainless steel head with wooden handle



HANDLE SIZE(MM) 150

HAND FORK

Stainless steel head with wooden handle



HANDLE SIZE(MM) 150



HAND TRANSPLANTER

Stainless steel head with wooden handle



HANDLE SIZE(MM) 150

HAND CULTIVATOR

Stainless steel head with wooden handle



HANDLE SIZE(MM) 150



HAND TROWEL

Stainless steel head with plastic handle



HANDLE SIZE(MM) 150

HAND FORK

Stainless steel head with plastic handle



HANDLE SIZE(MM) 150



HAND TRANSPLANTER

Stainless steel head with plastic handle



HANDLE SIZE(MM) 150

HAND CULTIVATOR

Stainless steel head with plastic handle



HANDLE SIZE(MM) 150



HAND TROWEL



Stainless steel head with wooden handle



HANDLE SIZE(MM) 150

HAND TRANSPLANTER

Stainless steel head with wooden handle



HANDLE SIZE(MM) 150



HAND FORK



Stainless steel head with wooden handle



HANDLE SIZE(MM) 150

HAND PATIO KNIFE

Stainless steel head with plastic handle



HANDLE SIZE(MM) 150



HAND WEEDER

Stainless steel head with wooden handle



HANDLE SIZE(MM) 150

DIBBER

Stainless steel head with wooden handle



HANDLE SIZE(MM) 155





STAINLESS STEEL LONG HANDLE TOOLS

GARDEN RAKE



Polished head securely fixed to tubular steel handle with plastic hand grip



HEAD WIDTH(MM) 300
HANDLE SIZE(MM) 1220

DUTCH HOE

Polished head securely fixed to tubular handle with plastic hand grip



HEAD WIDTH(MM) 120
HANDLE SIZE(MM) 1220



LAWN EDGER



Polished head securely fixed to tubular handle with plastic 'T' hand grip



HEAD WIDTH(MM) 210
HANDLE SIZE(MM) 820

GARDEN RAKE

Polished head securely fixed to a wooden handle



HEAD WIDTH(MM) 300
HANDLE SIZE(MM) 1220



DUTCH HOE



Polished head securely fixed to wooden handle

 HEAD WIDTH(MM) 120
HANDLE SIZE(MM) 1220

LAWN EDGER

Polished head securely fixed to wooden handle with plastic 'T' hand grip

 HEAD WIDTH(MM) 210
HANDLE SIZE(MM) 820





STAINLESS STEEL SPADES & FORKS

STAINLESS STEEL SPADES AND FORKS

DIGGING SPADE



Hardened and tempered mirror polished head with plastic handle

 BLADE SIZE(MM) 280x180
SHAFT SIZE(MM) 720

DIGGING FORK

Hardened and tempered mirror polished head with plastic handle

 BLADE SIZE(MM) 280x180
SHAFT SIZE(MM) 720



BORDER SPADE



Hardened and tempered mirror polished head with plastic handle

 BLADE SIZE(MM) 230x150
SHAFT SIZE(MM) 690

BORDER FORK

Hardened and tempered mirror polished head with plastic handle

 BLADE SIZE(MM) 230x150
SHAFT SIZE(MM) 690



DIGGING SPADE



Hardened and tempered mirror polished head with wooden handle and plastic D/grip

 BLADE SIZE(MM) 280 x 180
SHAFT SIZE(MM) 720

DIGGING FORK

Hardened and tempered mirror polished head with wooden handle and plastic D/grip

 BLADE SIZE(MM) 280 x 180
SHAFT SIZE(MM) 720



BORDER SPADE



Hardened and tempered mirror polished head with wooden handle and plastic D/grip

 BLADE SIZE(MM) 230 x 150
SHAFT SIZE(MM) 690

BORDER FORK

Hardened and tempered mirror polished head with wooden handle and plastic D/grip

 BLADE SIZE(MM) 230 x 150
SHAFT SIZE(MM) 690



